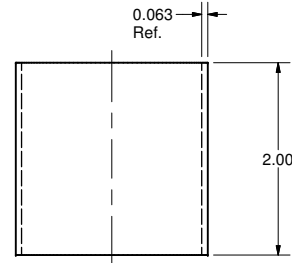
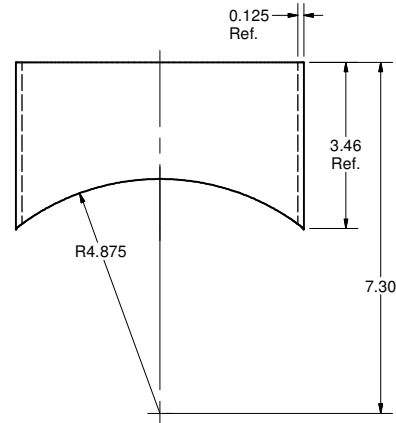
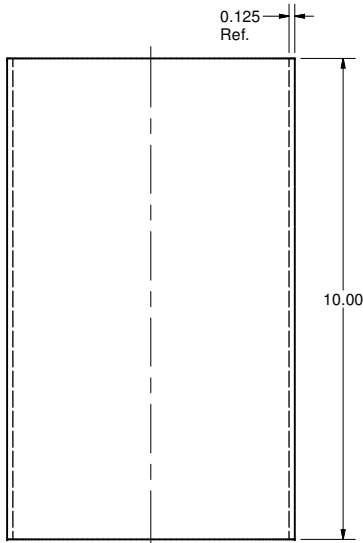
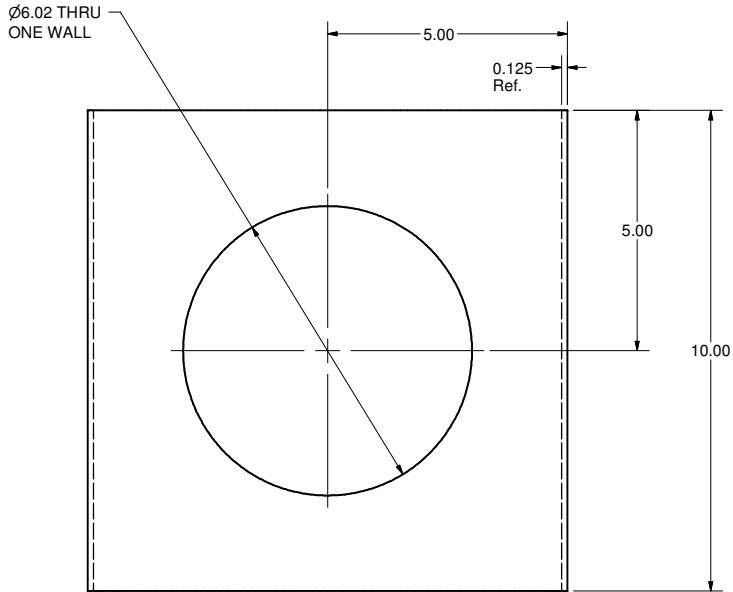
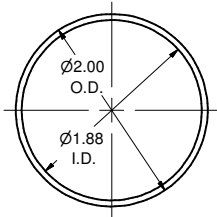
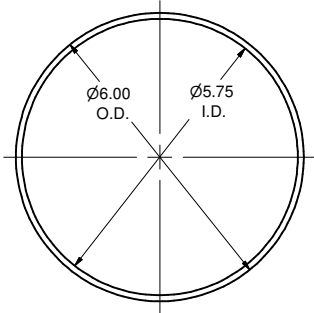
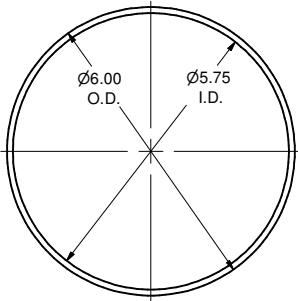
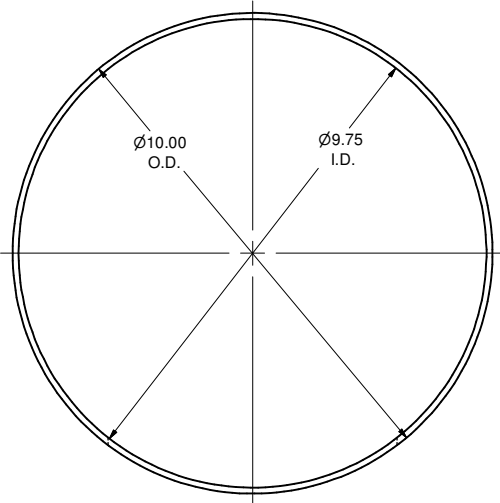


REVISIONS			
SYM.	ZONE	DESCRIPTION	DATE APP.

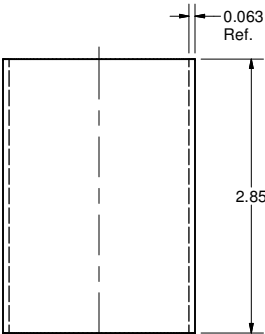
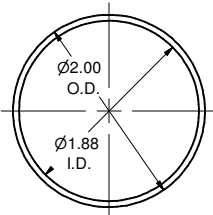


**T1 CROSS TUBE**  
FILE NAME: 7110-036  
SHEET NO.: 3  
DFT. SCALE: 1:2  
MATERIAL: 304L Stn. Stl. Vac. Quality Tubing  
QTY: 1 Req'd  
NOTES:

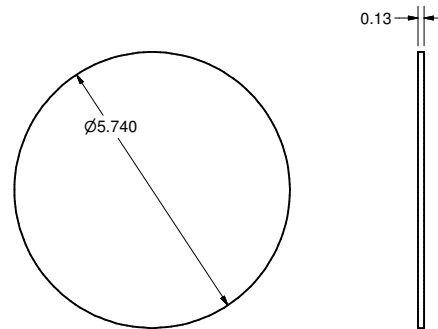
**T2 DOWN TUBE-BOTTOM**  
FILE NAME: 7110-036  
SHEET NO.: 3  
DFT. SCALE: 1:2  
MATERIAL: 304L Stn. Stl. Vac. Quality Tubing  
QTY: 1 Per Assy  
NOTES:

**T3 DOWN TUBE-TOP**  
FILE NAME: 7110-036  
SHEET NO.: 3  
DFT. SCALE: 1:2  
MATERIAL: 304L Stn. Stl. Vac. Quality Tubing  
QTY: 1 Per Assy  
NOTES:






**T4 TUBE-A**  
FILE NAME: 7110-036  
SHEET NO.: 3  
DFT. SCALE: 1:1  
MATERIAL: 304L Stn. Stl. Vac. Quality Tubing  
QTY: 2 Per Assy  
NOTES:



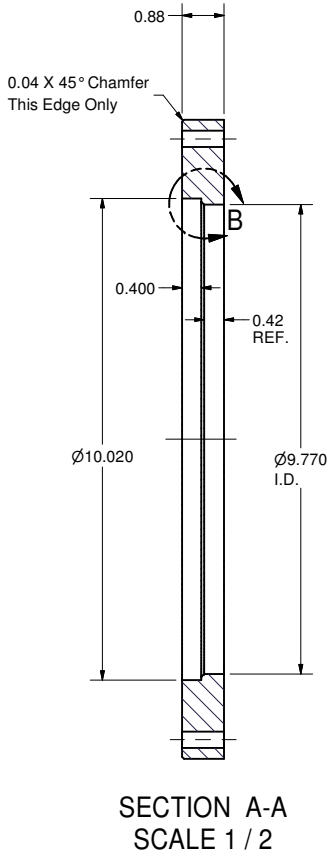
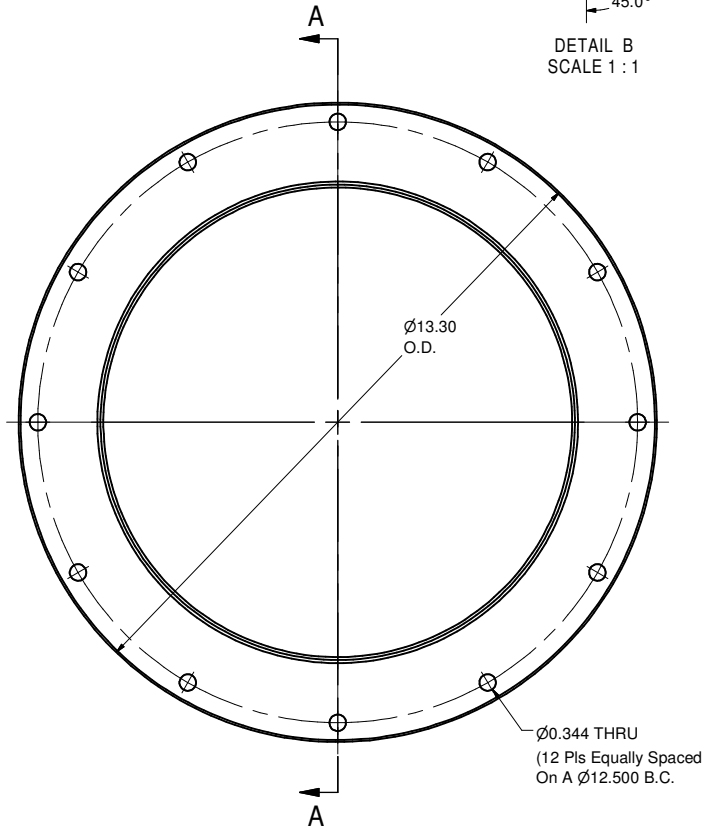
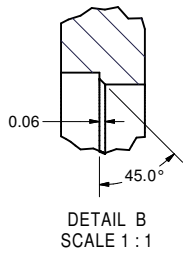
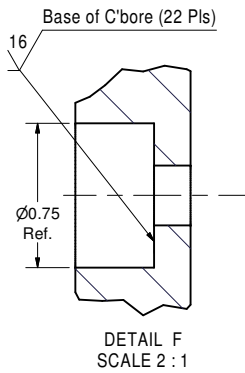
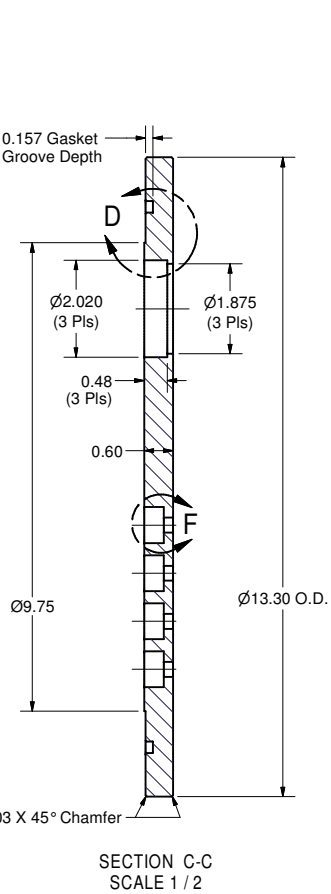
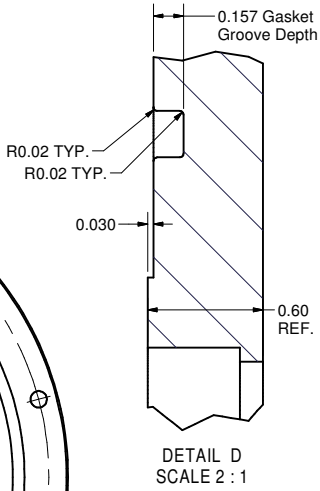
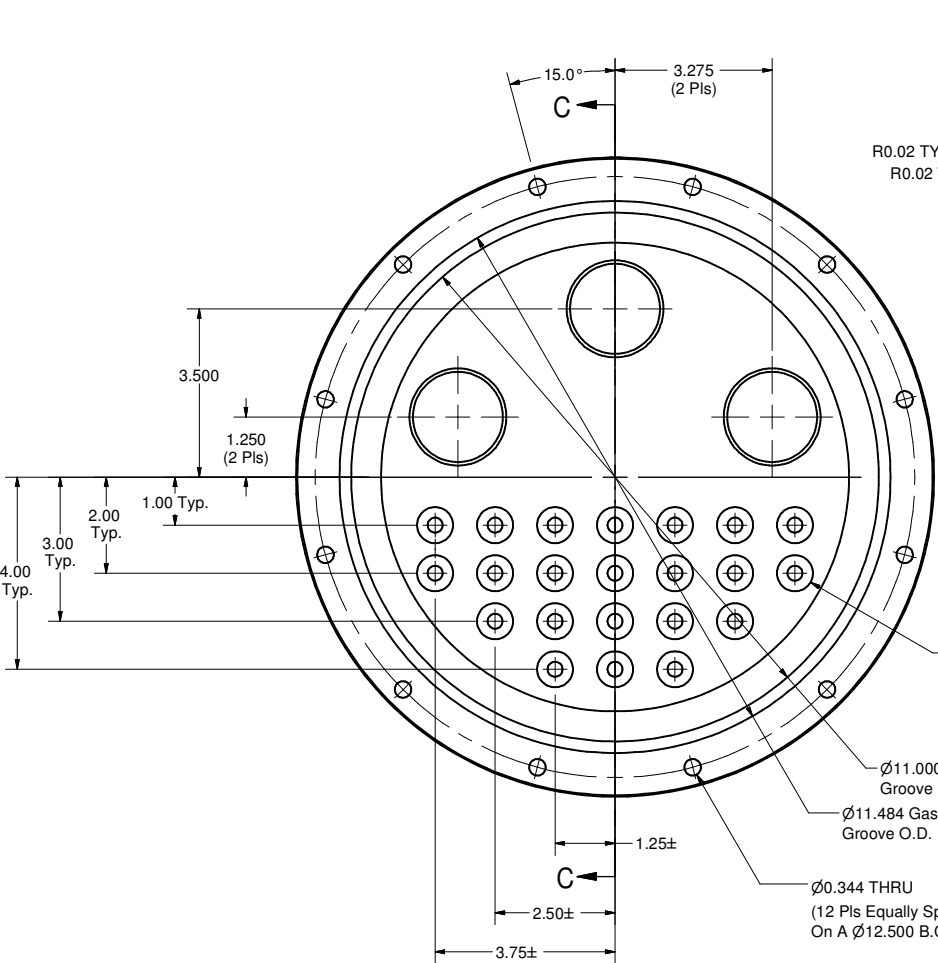
**T5 TUBE-B**  
FILE NAME: 7110-036  
SHEET NO.: 3  
DFT. SCALE: 1:1  
MATERIAL: 304L Stn. Stl. Vac Quality Tubing  
QTY: 1 Per Assy  
NOTES:



**C1 DOWN TUBE-BOTTOM CAP**  
FILE NAME: 7110-036  
SHEET NO.: 3  
DFT. SCALE: 1:2  
MATERIAL: 304L Stn. Stl.  
QTY: 1 Per Assy  
NOTES:

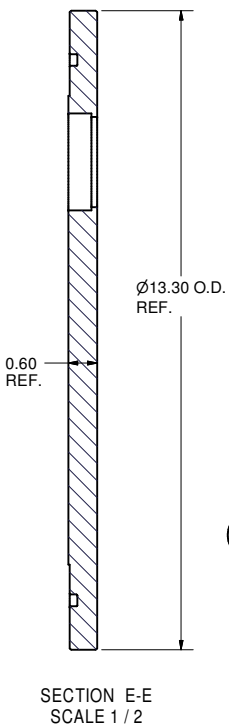
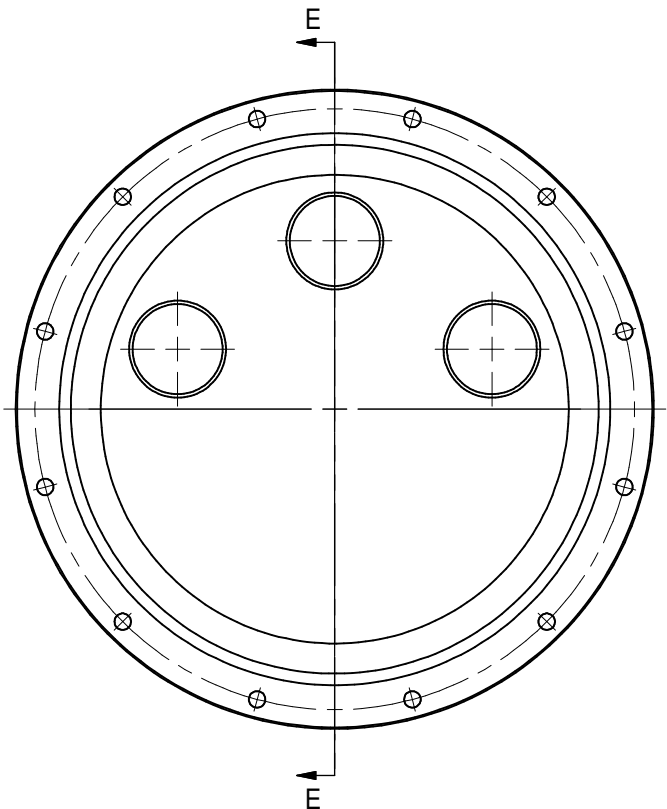
		ITEM	DWG. NO.	DESCRIPTION			G1	G2	G3	REMARKS		REV.
								QUANTITY				
	PRINT DISTR.	PLOT DATE: 6/8/2007 CAD FILE NAME: 7110-036.idw										
	7110-036 SH. NO. 3 OF 4	CR-1	UNLESS OTHERWISE SPECIFIED:  DIMENSIONS ARE IN INCHES; TOLERANCES ON: .00 ± .010 .000 ± .005 FRACTIONS ± 1/64 ANGLES ± 0.5° ALL SURFACES 		<div><div><b>LEPP</b></div><div>CORNELL UNIVERSITY Floyd R. Newman Laboratory Ithaca, NY 14853</div></div> <div>300K CABLE FEEDTHRU TUBE DETAILS</div>							
		REV.	CHECKED BY: PGQ APPROVED BY: PGQ	DRAWN BY JGL	DRAWN FOR PGQ	DATE 6/5/2007	SCALE		7110-036 SH. NO. 3 OF 4		REV.	

REVISIONS				
SYM.	ZONE	DESCRIPTION	DATE	APP.

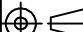



**F1** FLANGE-SENSOR FEEDTHRU  
FILE NAME: 7110-036  
SHEET NO.: 4  
DFT. SCALE: 1:2  
MATERIAL: 304L Stn. Stl.  
QTY: 1 Per Assy  
NOTES:

**F3** FLANGE-SENSOR 10 IN BORE  
FILE NAME: 7110-036  
SHEET NO.: 4  
DFT. SCALE: 1:2  
MATERIAL: 304L Stn. Stl.  
QTY: 2 Per Assy  
NOTES:



**F2** FLANGE- TUNER MOTOR FEEDTHRU  
FILE NAME: 7110-036  
SHEET NO.: 4  
DFT. SCALE: N.A.  
MATERIAL: 304L Stn. Stl.  
QTY: ??  
NOTES: This Flange is IDENTICAL to Flange F1 but WITHOUT The (22) cSink Hole Pattern.

		ITEM	DWG. NO.	DESCRIPTION			G1	G2	G3	REMARKS	REV.	
		QUANTITY										
D	PRINT DISTR.	PLOT DATE: 6/8/2007 CAD FILE NAME: 7110-036.idw										
7110-036 SH. NO. 4 OF 4	CR-1	UNLESS OTHERWISE SPECIFIED:  DIMENSIONS ARE IN INCHES: TOLERANCES ON: .00 ± .010 .000 ± .005 FRACTIONS ± 1/64 ANGLES ± 0.5° ALL SURFACES ✓		 CORNELL UNIVERSITY FLOYD R. NEWMAN LABORATORY ITHACA, NY 14853								
		300K CABLE FEEDTHRU FLANGE DETAILS										
		CHECKED BY: PGQ	DRAWN BY: JGL	DRAWN FOR: PGQ	DATE: 6/5/2007	SCALE:	D	7110-036	REV.			
REV.		APPROVED BY: PGQ								SH. NO. 4 OF 4		